

Jefferson Parish Council Contacts

Parish President:

Aaron Broussard

West Bank office: 364-2700

Email: abroussard@jeffparish.net

John Young, Councilman At-Large Division A

West Bank office: 364-2616 Fax: 364-3499

Email: jyoung@jeffparish.net

Assistant (West Bank): Terry Talamo

Email: T.Talamo@jeffparish.net

Parish Council Chairman:

Councilman At-Large Division B:

Tom Capella

West Bank office: 364-2624 Fax: 364-2828

Email: tcapella@jeffparish.net

Assistant (West Bank): John Fitzpatrick

Email: JFitzpatrick@jeffparish.net

3rd District Councilman:

Byron Lee

West Bank office: 364-2603

Email: blee@jeffparish.net

Assistant (West Bank): Pamela Watson

Email: PWatson@jeffparish.net

West Bank Council Address:

Mailing address:

4th Floor

New Gretna Courthouse

P.O. Box 9

Gretna, LA 70054-0009

HELPFUL NUMBERS

Citizens Affairs	736-6100
General code violations	364-3500
Environmental affairs	736-6102
Weed control	364-3540
Jefferson Transit	364-3450
Abandoned vehicles	364-3543
Stray animals	349-5111
Garbage pickup	736-6102
Recycling	736-6104
Mosquito control	366-0084
Water	349-5088
Streets	349-5800
Drainage	437-4939

The PECA newsletter is published quarterly by the Association Board in an effort to keep all residents apprised of items of interest to our community. It is delivered to all residents of the subdivision without charge. We welcome your comments, suggestions and ideas.

Plantation Estates Community Association Inc.

OFFICERS

CHARLES MILLER, President
371-8201; e-mail: president@plantationestates.org

BETH MARTIN, General Vice President
347-0424

CANDY JENSEN, Vice President, Restrictions
328-8351

JOHN FORTUNATO, Vice President, Security
616-8731; e-mail: security@plantationestates.org

WESLEY BOUDREAUX, Treasurer
340-4789

JUDY GLANCEY, Secretary
347-9207

COMMITTEE CHAIRPERSONS

COMMUNICATION

Charles Miller 371-8201
e-mail: news@plantationestates.org

FLAG COMMITTEE

Norman Gauthreaux 341-2599

GARDEN OF THE MONTH

Debbie Blanchard debblanch@aol.com

HOSPITALITY

Beth Owens 348-7066

MEMBERSHIP

Winnie Witkowski 340-8368

NEWSLETTER

Pat Ketcham 340-8100

PLANTATION ESTATES ARCHITECTURAL BOARD OF REVIEW

Jack Owens, Chairman
348-7066

DISTRICT REPRESENTATIVES

DISTRICT 1

BILL STAEHLE
340-5867

DISTRICT 2

DEBI LAJAUNIE
341-8441

DISTRICT 3

RICHARD BORDENAVE
340-1419

DISTRICT 4

JACK OWENS
348-7066

DISTRICT 5

MERLIN JACKSON
347-4934

DISTRICT 6

DREW LUKINOVICH
348-0583

DISTRICT 7

BILL LANGER
348-3570

AT LARGE #1

CHARLES GIARDINA
347-3581

AT LARGE #2

JOHN COMBEL
328-3911

AT LARGE #3

JUDY GLANCEY
347-9207

PLANTATION ESTATES NEWSLETTER



February, 2009 • Volume No. 51

Plantation Estates Community Association • P. O. Box 683 • Marrero, LA 70073

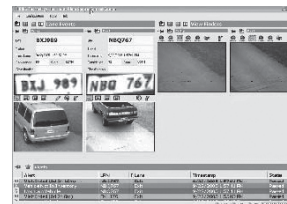
Web Site: www.plantationestates.org

President's Report

Dear Friends and Neighbors,

If you're new to the neighborhood, we welcome you to join the association. For only \$60/year, our association is able to support numerous social events like the Annual Night Out Against Crime, homeowners meeting, several children events, put up light pole banners, landscaping and maintaining the entrances, distribute periodic newsletters, maintain our website and much more. Association dues are renewed on January 1st and we appreciate your continued support. There is no other organization that works exclusively for Plantation Estates to make the streets safe, preserve property values, and build a stronger community for our homeowners.

The majority of my report in this issue will be dedicated to one of our biggest accomplishments coming to Plantation Estates this year. Col. Fortunato will also discuss this briefly in his Security Report and update us on how our police patrols make a difference in our subdivision. On January 12, 2009, the Plantation Estates Community Association Board approved the installation of cameras in our subdivision. Over the past year, you may have seen us meeting with vendors at the Barataria entrance as well as noticing some of the camera equipment and wireless communication devices on the lights poles that were installed for us during a trial period. After much discussion and visiting sites to evaluate each of the camera systems, we chose to partner with the Jefferson Parish Sheriff's Office. I thank the Board Members who took time out of their schedules to make this happen. The proposals submitted from the vendors included technology such as wired cable connections, 2.4 Ghz systems, a 900 Mhz Mesh System and even a Verizon wireless solution; however, the JPSO proposal was the only system capable of capturing license plates that we set as a minimum requirement for the project. Our Board Members were invited to see a live demonstration of this system at the JPSO office in Harvey. This system has proven to capture license plates both day and night and is within our budget. The presentation was given by Chief John Thevenot, Captain Emile Larson and Col. John Fortunato. The photo attached shows a screen print of the software being used in the JPSO Detectives Bureau. The technology is similar to the red light cameras in Jefferson Parish and is assisting law enforcement in their daily work. Read the Times Picayune article later in this newsletter titled, *Cameras help recover 3 stolen cars in one day*. The article highlights the law enforcement success and provides the benefits we will receive from these cameras.



This camera system has many additional features that were not available with any other vendor. The camera software stores the license plate image and a color snapshot photo of the vehicles make/model. In about 60 seconds, the software performs OCR (Optical Character Recognition) on the license plate and runs it against the database for any outstanding problems. If it turns out to be a stolen plate, a 911 dispatcher is notified to send a police unit to the area immediately. Sheriff Normand has plans to expand this program in the future to include unregistered sex offenders, wanted felons, cars connected to Amber Alerts and more. This partnership with JPSO on the camera project will save our civic association from the recurring expenses of maintaining a server to store the videos, monitoring the functionality of the cameras and paying the monthly expenses for the power and internet connections.

Sheriff Normand has embraced many uses of cutting-edge technology. He has re-designed the JPSO website to make it more user-friendly, has recently started emailing crime and arrest updates that occur in our area, and continues to add more license plate cameras throughout the Parish. We thank the Sheriff for allowing us and other associations to partner with them and commend the entire JPSO team for their efforts.

Once again, I would like to thank Councilman Byron Lee for securing \$15,000 towards the purchase of these cameras and the unanimous support of the entire Jefferson Parish Council on the vote. Even with these extra funds, this camera project was only possible with the money collected from our security taxing district. In addition to the cameras coming very soon, we still continue to maintain police patrols daily. With these extra security measures in place and homeowners being vigilant, we can continue to keep this a safe place to live. The security taxing district will help us maintain police patrols and cover any repair or replacement cost to the cameras that may be required in the future.

As you may have noticed, the horse stables between Seven Oaks Road and the Cousin Canal was recently cleared and the animals were removed. We spoke to the land owner and he said his long-term goal is to develop houses on the property. The land becomes very narrow as you go further to the back; so, there is probably only room for a few houses. Obviously our main concern would be connecting the road to Cousins Blvd. or opening our dead-end on Oakley Drive. We have spoken to both Councilman Byron Lee and Terry Talamo with Council-at-Large John Young's Office. Both are Plantation Estates homeowners that understand the impact this would have and they fully support keeping both roads closed. If we get any further information on the development, we will provide an update.

If you have community news or new ideas, we would love to hear from you. If you would like to be added on our email list, please email president@plantationestates.org.

Your neighbor,

Charles Miller, III

Plantation Estates Community Association, President
president@plantationestates.org

The Times-Picayune

Cameras help recover 3 stolen cars in one day

Jefferson system scans license plates in traffic

Friday, January 02, 2009
East Jefferson bureau

Tuesday was the most successful day thus far in the new effort by the Jefferson Parish Sheriff's Office to find stolen cars with the use of special cameras that scan license plates in traffic, a spokesman said. Deputies recovered three stolen vehicles in Algiers, Harahan and Terrytown.

The new system had the Sheriff's Office outfit some patrol cars with cameras that scan license plates in traffic and parking lots and automatically compare the plates with a computerized database of stolen vehicle information. Some other cameras are mounted on poles throughout Jefferson Parish.

The system can alert on a stolen car almost instantly, enabling deputies quickly to impound the vehicle and, in some cases, make an arrest.

Tuesday morning, a 3rd District patrol deputy was crossing the Crescent City Connection bridge when his system alerted him to a stolen vehicle, said Col. John Fortunato, a Sheriff's Office spokesman. He followed it to Algiers, and, with help from New Orleans police, arrested two people in the vehicle, whose names were not released. The vehicle had been stolen in East Baton Rouge Parish.

Tuesday night, a pole-mounted camera in East Jefferson signaled 4th District officers about a stolen pickup truck. After a brief pursuit, they stopped it in the 800 block of Hickory Avenue in Harahan and arrested Mike Walker, 39, 1018 Compromise St., Kenner, and Frederick Richardson, 36, of Houma, Fortunato said. The truck had been stolen in Houma.

While that incident was occurring, a pole-mounted camera in West Jefferson detected a stolen car that deputies soon found in a driveway in the 300 block of Wright Avenue in Terrytown. When Keith Hunter, 36, of 4119 Jupiter St., Chalmette, entered the vehicle and drove off, deputies stopped and arrested him, Fortunato said. The car had been taken from a rental agency at Louis Armstrong International Airport in Kenner.

2330 Lapalco Blvd.
Harvey, LA 70058
(504) 362-0800

210 Old Hammond Hwy.
Metairie, LA 70005
(504) 828-2220

208 Lee Lane
Covington, LA 70433
(985) 875-0432

MARK AND LETTY BERGERON, Proprietors

PATRICK CAMPBELL, ABR*, MS, E-COM
REALTOR®

(504) 480-9055 CELL
(504) 361-8033 BUSINESS
(504) 361-8099 FAX
Patrick.Campbell@CITIC.com

COLDWELL BANKER®
TEC REALTORS®
1211 Central de Natchez Drive
Suite 100
New Orleans, LA 70114
www.coldwellbanker.com/jeffersonparish

Richard Bordenave Realtor®
Website: <http://www.richardbordenave.com>
Email: richard@richardbordenave.com

Prudential
GARDNER REALTORS®
3723 MacArthur Blvd. New Orleans, LA 70114
Bus: (504) 366-4511 Fax: (504) 366-4519
Cell: (504) 232-1297

An independently owned & operated member of The Prudential Real Estate Affiliates, Inc.

STATE FARM
INSURANCE COMPANIES
HOME OFFICES: BLOOMINGTON, ILLINOIS

DAVID W. PERRET, SR., LUTC
Agent
725 Westbank Expressway
Westwego, LA 70094

bus.: 504.347.6228 • fax: 504.341.9785

PRIVATE TUTORING
EDIE MEAUX
504 - 486 - 4420
EdithMeaux@Cox.net
LOUISIANA CERTIFIED
Kindergarten / Elementary
All Subjects

DAVID RIVAS REALTY
32 Years of Experience
4% Commission to Seller
Why Pay More?
504-341-4263
75% - 25% Agent-Broker Split

O'Briens
GRILLE

2020 Belle Chasse Hwy.
Gretna, Louisiana 70056
RESERVATIONS - 504.391.7229

Acadian
Carpet
Center
Inc.

LOOK US UP ON THE WEB
www.acadiancarpet.net

5140 LAPALCO BOULEVARD - MARRERO, LA 70072
PHONE (504) 340-2432 FAX (504) 340-2468

4802 Westbank Expwy.
Marrero, LA 70072

PATIO GARDENS
&
LANDSCAPING, INC.

WAYNE NOCITO
Graduate Horticulturist

347-7694

Fast, Friendly Service and Discount Prices...

For Your Active,
Healthy Lifestyle!

majoria drugs®
Your Partner in Healthy Living

Bring this coupon to either store and receive
\$5.00 OFF
any over-the-counter purchase
of \$25.00 or more
*some restrictions apply • offer expires 3-31-09

2564 Baratara Blvd. • Marrero
(504) 340-3592

888 Terry Pkwy. • Terrytown
(504) 392-1551

www.majoria.com

JAY SUSSLIN
REALTOR®

KELLER
WILLIAMS®
REALTY
WESTBANK

2600 Belle Chasse Hwy,
Suite G
Gretna, Louisiana 70056
Office: 504-207-2007
Fax: 504-648-2733

For Jay Susslin, keeping it simple is the key to success. By applying this philosophy to his real estate career, Jay has earned a solid reputation as one of the Westbank's leading real estate professionals. Using his business expertise, lifelong knowledge of the area and no-pressure approach, Jay makes your next move the best - and easiest - one yet. If you're thinking about buying or selling a home, call on Jay Susslin because he's KEEPING IT SIMPLE. Contact him today.

Direct: 504-723-5403

Email:
Jay@JaySusslin.com

Website:
www.JaySusslin.com

JAY SUSSLIN
Keeping it Simple

Look Better. See Better. St. Charles VISION OUTLET

Peoples Health Network
(Tenet Choice 65)
Making quality affordable.

- Comprehensive eye health exams
- Diagnosis and management of ocular disease
- Specializing in difficult contact Lens fits
- Name brand eyewear
- Insurance accepted, including major medical plans
- Emergency, walk-in, and evening appointments available

3909 Lapalco Blvd.
Suite 201
504-328-9733

Located at the corner of Paxton & Lapalco
inside the Family Doctors building on the 2nd floor.
We're part of your neighborhood.



Garden of the Month

By Debbie Blanchard

December 2008

M/M Byron Lee	40 Gainswood Dr. East	District 7
M/M David Perret, Sr.	28 Melrose	District 5
Mr. Joe Saporita	80 Dunleith	District 1
Ms. Joyce Spera	50 Seven Oaks	District 5
M/M Elmo Pecot, Jr.	38 Oak Alley	District 4
M/M Melvin Bijou	3 Melrose	District 4

January 2009

Ms. B.J. Willis	58 Oak Alley	District 4
M/M Leo Mediamolle	31 Briarfield	District 6
M/M Steven Martin	30 Shadows	District 6
Ms. Faye Danos	18 Tara Ct	District 6

The Gardens of the Month are featured with photos under the "Members Only" section of the website.

Post your pets on the Plantation Estates website located at:

www.plantationestates.org at no charge to all active Association members. This service is offered in an effort to help locate the owner of a lost pet(s) immediately and contact you as soon as possible. Email a picture of your pet(s) and contact information to be posted online to info@plantationestates.org

PARKING AND VEHICULAR CODE VIOLATIONS:

LOUISIANA STATUTES

RS 32:144 Improper parking (vehicles parked against the flow of traffic)

RS 32:143 Posted parking (no parking)

JEFFERSON PARISH ORDINANCES

- 36:4 No parking on a sidewalk
- 36:5 No parking on servitude
- 36:88 No parking of a vehicle on a street for more than 48 hours
- 36:92 No parking on a neutral ground
- 36:93 No parking within 30 feet of an intersection
- 36:94 Blocking a driveway (parked directly across from or 3 feet of either side)
- 36:95 No parking within 20 feet of a fire hydrant
- 36:129 Abandon, junk or wrecked vehicles

CHILD CARE SERVICES AVAILABLE

The following residents of Plantation Estates are available to provide baby sitting services:

Cassie Graziano - 341-3284
Tiffany Mosel - 340-9281
Danielle Boudreaux - 340-4789
Allyson Graziano - 341-3284

If you are under 21 and would like your name listed for this or any other service within Plantation Estates please contact Pat Ketcham at 340-8100.



GRASS CUTTING

The following resident of Plantation Estates is available to provide lawn mowing services:

Dexter Matrana cell (504)-554-1226

If you are under 21 and would like your name listed for these or any other service within Plantation Estates, please contact Pat Ketcham at 340-8100



SCHWAB CLEANING SERVICE
Let us take care of your cleaning...

*LICENSE *INSURANCE
RESIDENTIAL AND COMMERCIAL
QUALITY AND EXPERIENCE

(504)931-3822
(504)250-7488
schwabservices8@aol.com

CAUTION



MEANS 20!

WALKERS—Always walk against (Facing) Traffic. Stay on the extreme left side of the road, especially around curves in the road.

BIKERS—Always ride with traffic. Stay on the right side of the road.

To Report Traffic Related Complaints
Call the JPSO Traffic Division
465-1480

Neighborhood News



Do you need a copy of the Plantation Estates Covenants & Restrictions?

We occasionally hear from new homeowners that they were not informed of restrictions either by their real estate agent or their home was purchased as a *For Sale by Owner*. If you need a copy, visit our website at <http://www.plantationestates.org>.

CHRISTMAS 2008 BEST DECORATED WINNERS

Dr/M Garland Green	64 Longwood	District 3
M/M Victor Cronley	9 Hermitage	District 2
Mr. Jack Lopipero	53 Hermitage	District 1
M/M Anh Hoang Nguyen	8 Seven Oaks	District 5
M/M Thomas Hebert	32 Melrose	District 5
M/M Kevin O'Brien	30 Asphodel	District 3
M/M Norman Gauthreaux	25 Shadows	District 6
M/M Phan Vuong	28 Nottoway	District 7

Santa Visits Plantation Estates - By Beth Martin

The Annual PECA Easter Egg Hunt will be held at the home of John and Brenda Combel, #10 Oakley Drive. Santa arrived at 5:30pm and began greeting visitors young and old. We had over 100 children visit Santa that night and each one left with a gift from him. I would like to thank Mr. and Mrs. Combel for the use of their lovely decorated front yard and refreshments, Candy Jensen, Beth Owens, Debbie and Danny Blanchard for all their help before, during and after the event.

Easter Egg Hunt - By Beth Martin

The Annual PECA Easter Egg Hunt will be held at the end of March or beginning of April, watch for flyers for the exact date and location. We will once again have loads of Easter Eggs for finding, the "Special Eggs" with special prizes and a visit from the Easter Bunny. Hope to see you there.

Pet owners that Walk in Plantation Estates

The association continues to receive complaints about pet owners who walk their pet and stop to potty in someone else's yard. We ask that you please be respectful of others by either picking up after your pet or consider keeping your pet in your yard. Many of you do follow this rule and we greatly appreciate your understanding for other's property. Below is the language from Jefferson Parish Municipal Code, which you can find on their website at <http://www.jeffparish.net>. Thanks for your cooperation.

From the Jefferson Parish Code:

Sec. 7-28. Clean-up and disposal of excreta.

If any part of a public street or square or the private property of a person other than the owner or keeper of an animal shall be soiled by the excreta of such animal, whether such nuisance shall take place in the presence of the owner or keeper or not, the owner or keeper shall promptly remove such excreta and dispose of it in a sanitary manner. (Code 1961, § 4-17(j))

Cousins Canal Improvements Update

By: Randall Schexnayder

The Cousin Canal Improvements being done right now is in the Southeast Louisiana Urban Flood Control Project (SELA). The construction project is referred to as Cousins Canal Phase 2 and includes improvements to Cousins Canal from approximately 700 feet west of the Woodmere Bridge to Pipeline Canal. The canal is being improved by constructing a concrete "U-Frame". The project is being constructed by the US Army Corps of Engineers and their contractor for this work is Bucktown Construction. Construction is approximately 80% complete and is scheduled to be completed by the end of May 2009.

Restriction Committee - By Candy Jensen

Happy New Year to all our homeowners and on behalf of the Plantation Estates Restrictions Committee, it is necessary to once again address existing and reoccurring issues with our homeowners.

- **BOATS/MOTOR HOMES:** We continue to have homeowners park these items in their driveway or worse yet, on the street in front of their residence. This is very dangerous for other drivers, walkers and even our security people. Please follow the restrictions information on our website.
- **OVERNIGHT PARKING:** This issue continues, including parking across from other driveways and too close to the corner of the street.
- **COMMERCIAL VEHICLES:** No visible commercial vehicles as well as there are too many magnet door advertisements for businesses.

Thanks to those homeowners that have complied with notification/request letters and contacts. I'm pleased to say a few have even joined our forces as to keeping tabs on their own area and also talking to some of the homeowners that have to be reminded as to restriction infractions. This is an "everyone" has to work together effort for success. You might even advise new homeowners as to our website to review the restrictions.



Friendly
Accessible
Professional
Puts You First
Knowledgeable
33 Years Experience

Call Sandy
392-2129 - 669-7237

I know your neighborhood & the market, and have the expertise to sell your property, too. If you are interested in buying or selling, please call me now.



www.SandyDomico.com

Sandy Sells Plantation Estates

If your property is currently listed with another broker, please disregard this offer.

FERDIE'S Printing Service

Est. 1972

FOR ALL YOUR PRINTING &
PROMOTIONAL PRODUCT NEEDS!

www.ferdieprint.com

(504) 341-6395 • (504) 341-6388
3751 Spencer Street • Harvey, LA 70058

HIGH VOLUME DIGITAL COLOR / BLACK & WHITE COPIES

- ▼ Books
- ▼ Brochures
- ▼ Business Cards
- ▼ Carbonless Forms
- ▼ Copies
- ▼ Covers
- ▼ Decals
- ▼ Die Cutting
- ▼ Embossing
- ▼ Envelopes
- ▼ Laminating
- ▼ Letterhead
- ▼ Letterpress
- ▼ Manuals
- ▼ Newsletters
- ▼ Pocket Folders
- ▼ Posters
- ▼ Prayer Cards
- ▼ Programs
- ▼ Signs

BIG JOHN COMBEL'S

WORLD OF WHEELS 2009 "Your Westbank Collision Center"

4512 4th Street • Marrero, Louisiana

(504) 361-1856 • (504) 348-2680



1st in Class, Best Paint



1st in Class, Top 10 Louisiana, Best Bike



1st in Class



"Proud to be a part of Plantation Estates"

SUPER Laborie's



Money Orders • Check Cashing

**Excellent Customer Service • Neat & Clean
Fast Check-Out Lanes**

3 Times the Convenience!

1951 Baratara Blvd. & Lapalco
(504) 349-9075

Open 7 Days 6am-10pm



MARRERO



GRETNA

2701 Baratara @ Ames • 347-1451

1900 Lafayette St. • 366-3557

Open 7 Days 7am-9pm

**Spectacular
Savings**

Laborie's

Check Out Our
WINE, BEER & LIQUOR

**SOLD AT THE ABSOLUTE
LOWEST LEGAL PRICE!**

Security

By: Colonel John Fortunato, Jefferson Parish Sheriff's Office



Hello again,

As we begin a new year here in Plantation Estates, I would like provide you with a year end wrap for 2008. We sailed through Halloween and Christmas with only a few incidents. We had some of the usual problems around Halloween. During the Christmas holidays we handled a few service calls for stolen or damaged decorations. We recorded 471 service calls. Our burglary detectives handled two residence burglaries resulting in the arrest of those individuals who were responsible for the break-ins. The 244 burglar alarm calls continue to be extremely high; so please, if you are experiencing a high volume of false alarms, notify your alarm service provider immediately. I am very pleased to announce that our 911 calls for suspicious persons and vehicles (30) continue on a steady pace. This in itself is a tell-tale method of letting us know that everyone remains vigilant. Our residents also called the JPSO 85 times for numerous complaints. Just as a reminder, it is okay to call 911 even in non-emergency situations.

As you may already know, we are working diligently with the JPSO to have cameras installed at strategic spots in PE. Charlie Miller explains in his column a lot of the specifics pertaining to the security cameras; so, please don't miss it in Charlie's comments.

We will continue to have roving security patrols that vary weekly. It is my belief that we continue to enjoy a low, almost non-existent crime problem because of the visibility and the persistence of our regular security patrol officers. Some of the other neighborhood associations in our area are not as fortunate as we are.

I had an opportunity to run some crime statistics for Plantation Estates, Barkley Estates, Woodmere, and Lincolnshire. Using these four areas, I feel certain you too will have to agree what a truly safe place Plantation Estates continues to be. Trust me, this is not by accident.

The following is a total crime analysis for all calls for service in the aforementioned four neighborhoods. The time period I queried was from January 1, 2004 (pre-Katrina) to December 31, 2008:

	Plantation Estates	Lincolnshire	Woodmere	Barkley Estates
Assault	1	48	158	1
Auto Theft	3	106	476	3
Battery	5	242	819	18
Burglar Alarms	804	967	6,402	708
Burglary	5	39	195	7
Business Burglary	0	16	25	0
Carjacking	0	1	10	0
Criminal Damage	32	257	864	14
Disturbing Peace	10	261	824	8
Drug Violations	3	88	325	2
Homicide	0	3	13	0
Illegal Discharge Weapon	7	243	430	2
Kidnapping	0	1	4	0
Peeping Tom	0	1	4	0
Rape	0	10	40	0
Residence Burglary	16	182	567	19
Robbery	0	28	72	0
Suspicious Person	127	1,115	9,713	42
Theft	32	180	579	12
Trespassing	0	5	26	0
Vehicle Accidents	70	490	1,287	19
Vehicle Burglary	14	83	361	19
TOTALS	1,129	4,366	23,194	874

Colonel John N. Fortunato
Vice-President Plantation Estates Security

2009 PECA MEMBERSHIP DRIVE

By Wynona Witkovski

The annual Plantation Estates Community Association (PECA) membership drive is currently underway. Membership invoices have been mailed. Membership dues are \$60.00 per calendar year payable upon receipt of the invoice. If you are already a member, please renew. If you have not yet joined, please consider making this the year that you step up and support the association's efforts to ensure that Plantation Estates continues to be the best place to live in the metro New Orleans area. A membership form is also included in this newsletter in case you have not received an invoice and form in the mail.

In 2008, the association's membership totaled 306 households, representing approximately 71% of the property owners in the subdivision. Each year the association's membership roster grows toward our ultimate goal of 100% participation.

If you have any questions concerning your membership or would like membership information, please contact Winnie Witkovski at 504.606.9759 or by email at wynona@tulane.edu or contact your district representative. Contact information for the district representatives is listed in the PECA newsletter and on the PECA website [www.plantationestates.org].

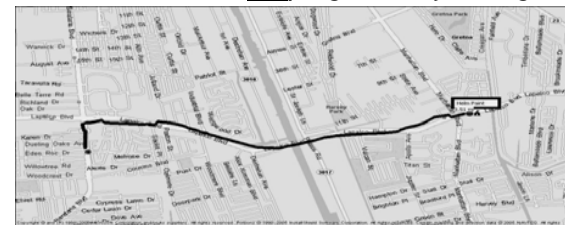
Please remember that your annual dues support many of the things the association does to enhance our community, which includes providing funding for:

- ❖ New seasonal banners
- ❖ Garden of the month awards
- ❖ Representation in the West Jefferson Civic Coalition
- ❖ Landscaping maintenance of 2 main entrances (Oak Alley & Parlange)
- ❖ One annual Homeowner/Membership meeting
- ❖ Quarterly neighborhood newsletters
- ❖ Maintenance of PECA website
- ❖ Four PECA sponsored neighborhood events per year
- ❖ Protection of our property values with oversight and enforcement of the restrictions and protective covenant documents for the neighborhood



HELM
PAINT & DECORATING, INC.

Buy your paint using Plantation Estates Community Association's name, and earn
\$.50 per gallon for your neighborhood projects!



Buy locally from locals, earn money for your neighborhood!

CALL 364-0780

1525 LAPALCO

CHECK OUT OUR 9

CONVENIENT LOCATIONS AROUND
THE METRO AREA @-

WWW.HELMPAINT.COM

- Get Contractor Pricing
- Keep your records through your neighborhood account!
- Support your local Paint Store!

Plantation Estates Membership Application

Please complete the following form and mail to:

PECA, P.O. Box 683, Marrero, LA 70073

(Please include your check to cover the yearly dues of \$60/year)

PLANTATION ESTATES COMMUNITY ASSOCIATION HOMEOWNER INFORMATION*

NAME: _____

SPOUSE'S NAME: _____

ADDRESS: _____

CITY: _____ STATE: _____ ZIP: _____

HOME PHONE NO.: _____

BUSINESS PHONE NO.: _____

E-MAIL ADDRESS: _____

DISTRICT NO.: _____ LOT NO.: _____ SQUARE NO.: _____
(If you don't know the District, Lot and Square #, leave it blank)

Thanks for your continued support.


*The
Ashleigh Lauren
Collection*



Nobody does "I Do" like we do!
1906 Barataria Blvd. • Marrero, LA 70072 • (504) 347-7332

BREAUX'S
JEWELERS
Fine Handcrafted Jewelry

More Than Women's Care...Family Care



1101 Medical Center Blvd.
Marrero, LA 70072
wjmc.org

West Jefferson Medical Center has many programs for women **AND** their families. From moms-to-be seminars to events for great grandmothers, our **Family Birth Place** and **West Jefferson Medical Center Women's Services** are here to assist your family.

Through parenting classes, support groups and grandparent gatherings, families can learn about health and wellness including how to care for your newest addition. Preventive screenings and talks are also available.

There's more. Call patient scheduling at 349-6300 to arrange your mammogram and visit our website ongoing for community program updates.

Just a few more examples of West Jefferson Medical Center caring for you and your family for nearly 50 years.

Learn More by Calling:
West Jefferson Medical Center's
Family Birth Place Nurse Educator
349-1301
or
Community Relations Department Nurses
349-2051

