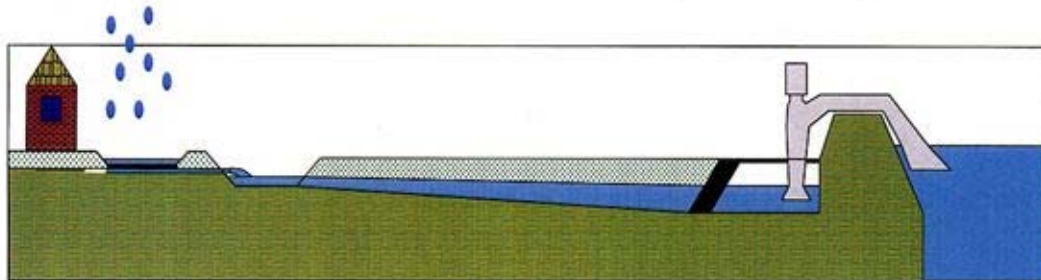


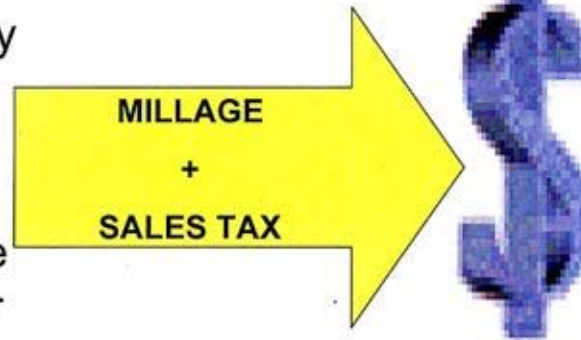
Parish Drainage and SELA

- The first part of our parish drainage system is our streets, which channel rainwater into drains and catch basins that funnel the water into underground pipes. Gravity takes the storm water in those pipes to larger pipes or ditches, which carry the water to main canals. Finally, the water flows into the suction bays of various pump stations where it is pumped into surrounding bodies of water outside of our flood protection system.



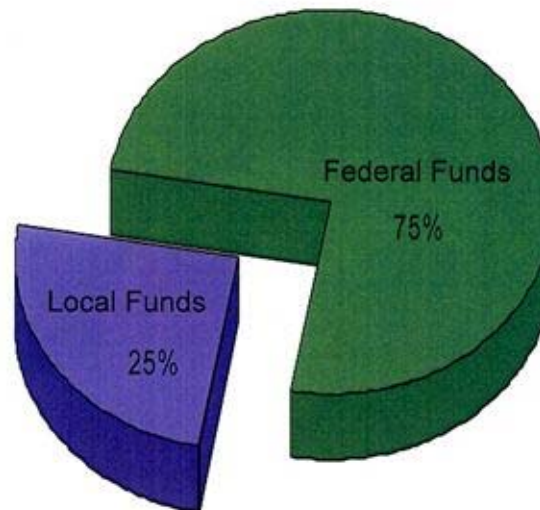
How is our Drainage Department funded?

- The Jefferson Parish Department of Drainage is funded by a dedicated millage and by a portion of our sales tax. This pays for maintenance and operations of our drainage system and our pump stations.



25% local match

- The federal government funds 75% of SELA, which stands for the Southeast Louisiana Flood Control Program, and requires 25% local matching funds, of which 20% can be in-kind compensation and 5% in cash.

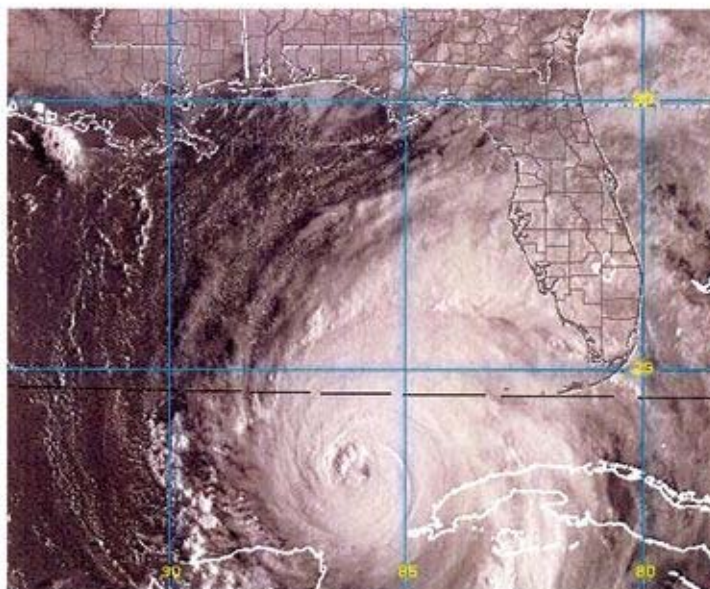


SELA match tax approved

- In 2001 the voters approved a separate 5-mill property tax to fund the local match for SELA funds from the federal government. Business associations supported this tax. The revenue produced by the tax can only be used for the specific purpose of paying the local match for SELA funds. The tax produces about \$10 million each year it is collected.

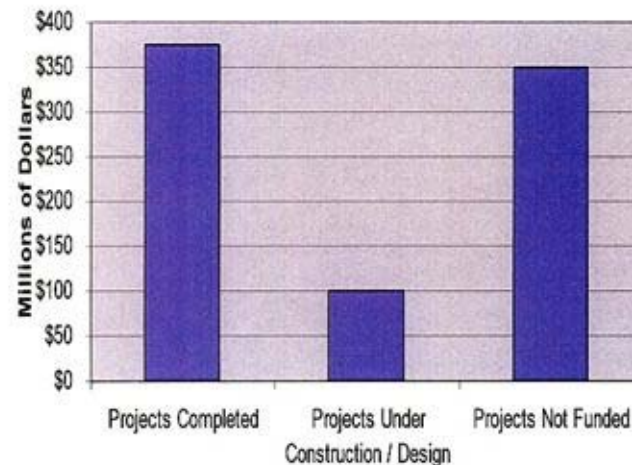
Since Katrina

- After Katrina, the federal government funded SELA at 100%, requiring no local match for the \$100 million appropriated to Jefferson Parish in 2005 and 2006. But in 2007 the federal government appropriated no money for SELA, so the parish Council decided to not collect the 5-mill property tax this year.



Projects completed

- So far, SELA has provided funding for \$375 million in major drainage improvement projects
- Another \$100 million in projects are under design or under construction
- Projects not funded: \$350 million, which likely will require 25% matching funds



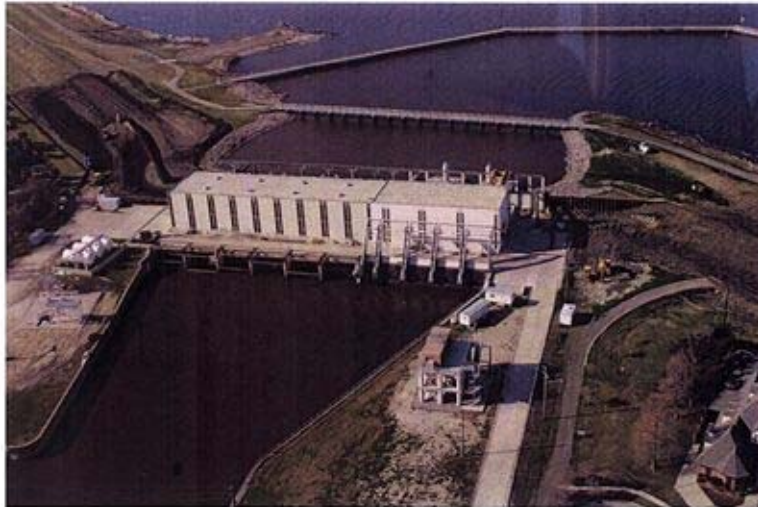
What SELA hasn't done

- SELA has not addressed smaller canals, ditches and underground drainage pipes in neighborhoods. Neighborhoods built before 1981 are not as capable of draining away rainwater as quickly as newer neighborhoods because the pipes under older streets are smaller than the ones installed since 1981. Also, SELA has not addressed improvements to the smaller neighborhood pump stations throughout the parish.



What kind of projects?

- SELA projects have included major drainage improvements such as upgrading the main canals in the parish and increasing the pumping capacity at our major pump stations



Where is the need now?

- Although we have a continuing need for more major upgrades to main canals and pumping stations, and we are fighting for continued SELA funding from the federal government, we also have a need to improve local drainage in order to get rainwater off the streets quickly and into the canals that carry it to the pumping stations.

The proposal

- SELA would still be the top priority of this 5 mill collection. The difference would be that any surplus funds generated by the 5 mills and not used for SELA local match would then be redirected to local drainage capital improvements. The election will be Saturday, July 21.



How would this affect SELA?

- The surplus portion of the millage would be, by law, only available for physical improvements such as increasing the size of underground pipes and improving ditches to get rainwater off the streets and out of our neighborhoods more quickly.

